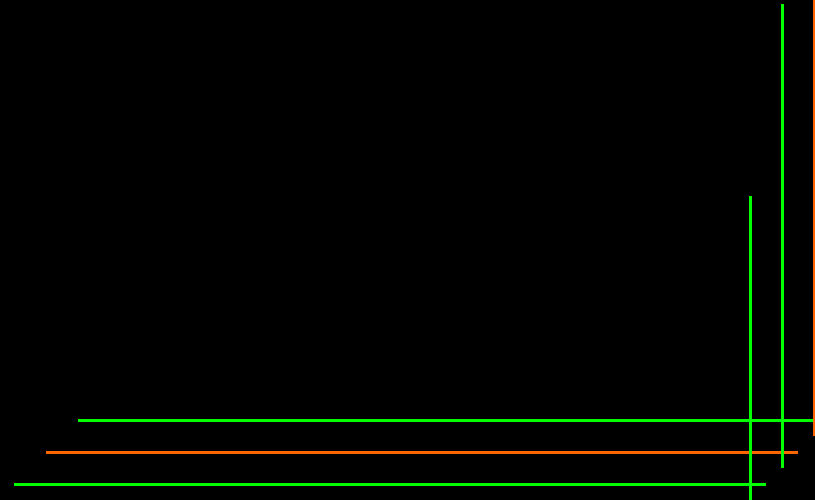


# INVENTORY PROJECTS MARAMA 2008

Julie McDill, PE



# INVENTORY PROJECTS

## MARAMA 2008

1. Emission Forecasting Models –  
IPM and EGAS
2. Ammonia Emissions Estimation
3. Condensable PM<sub>2.5</sub>
4. Mobile Source Organic Carbon

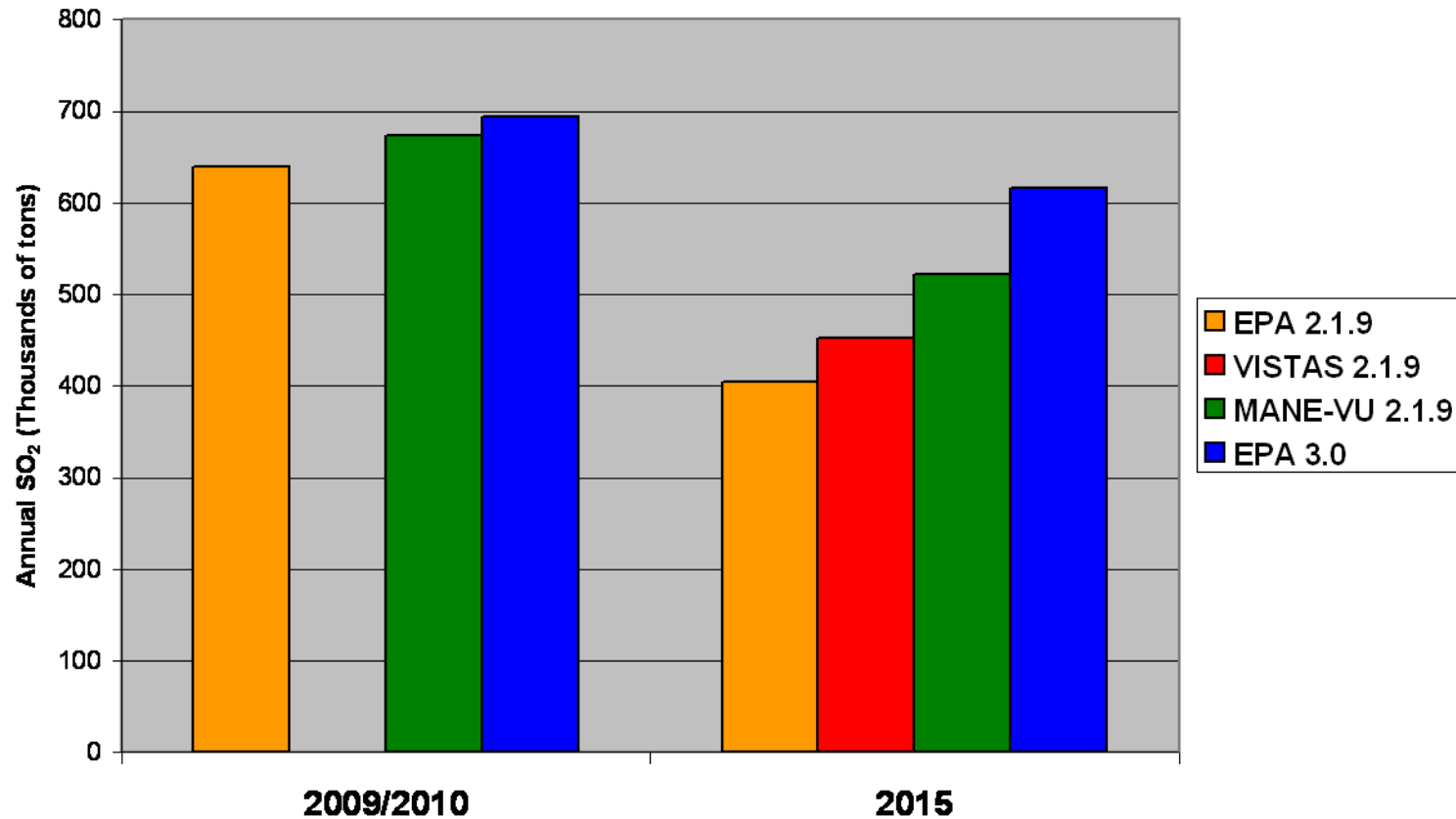
# INVENTORY PROJECTS

## MARAMA 2008

1. Emission Forecasting Models –  
IPM and EGAS
2. Ammonia Emissions Estimation
3. Condensable PM<sub>2.5</sub>
4. Mobile Source Organic Carbon

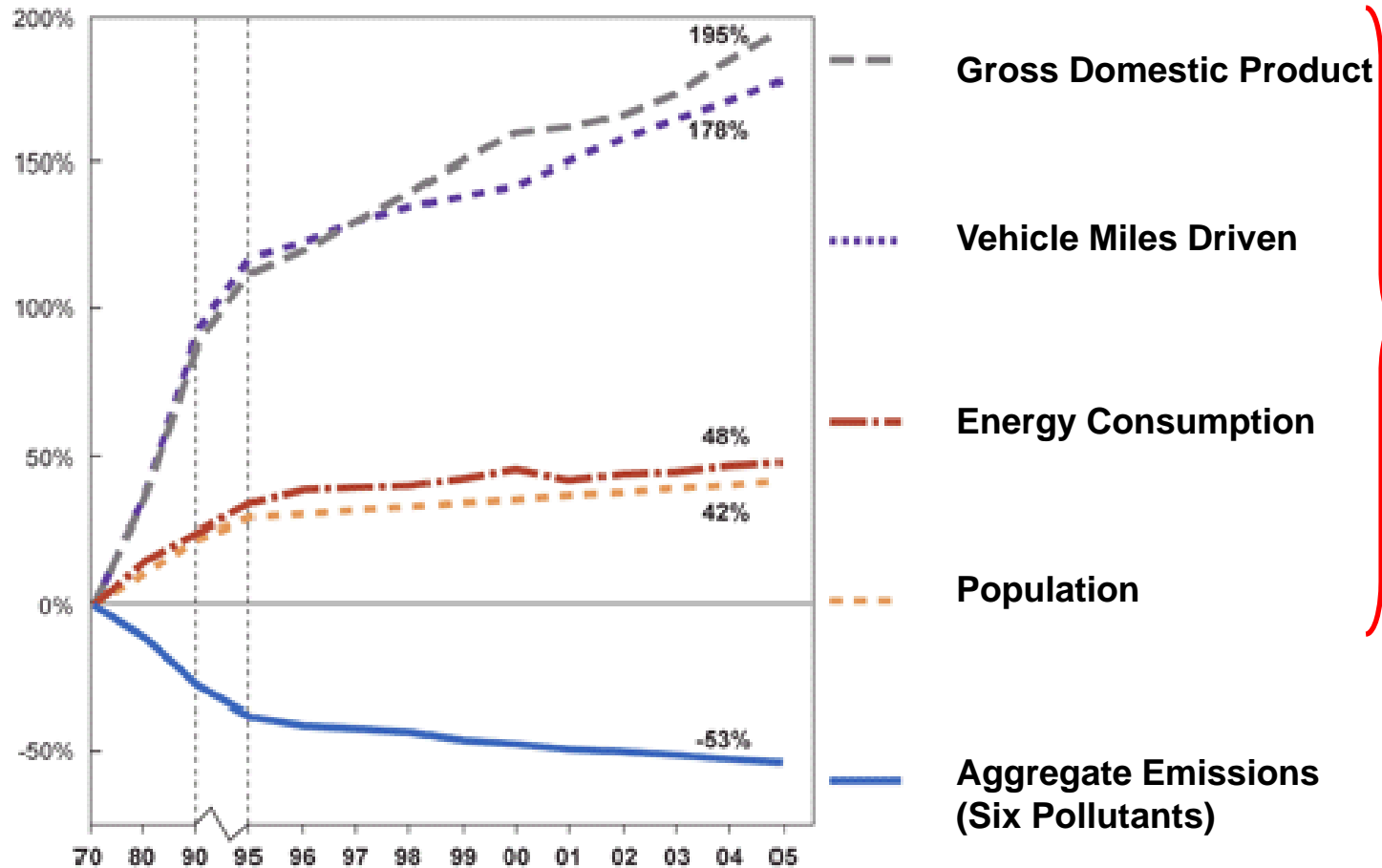
# INVENTORY PROJECTS - MARAMA 2008

MANE-VU Total IPM Annual SO<sub>2</sub> Emissions Comparison



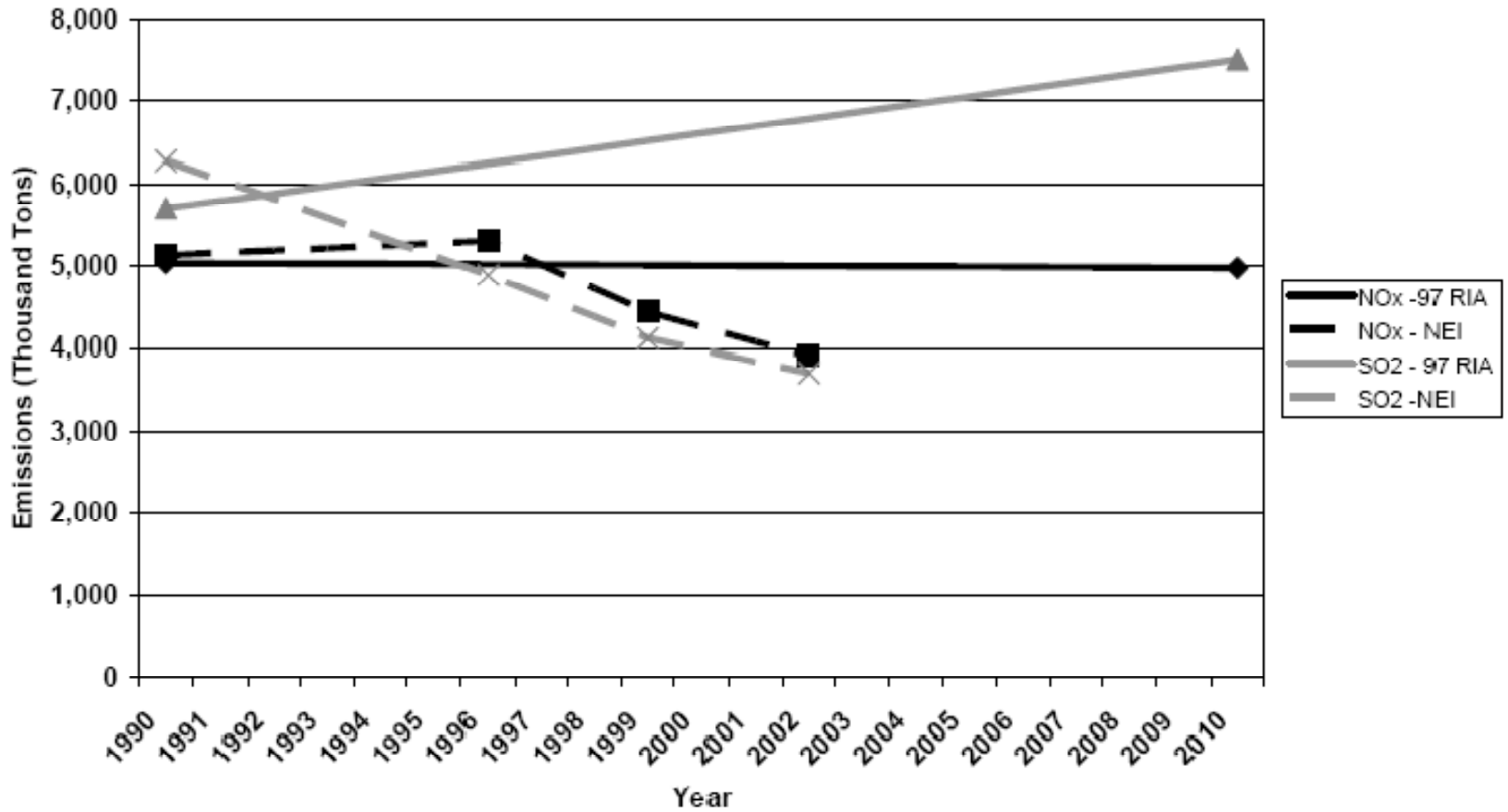
# INVENTORY PROJECTS - MARAMA 2008

## Comparison of Growth Areas and Emissions



# INVENTORY PROJECTS - MARAMA 2008

## Comparison of 1997 PM NAAQS RIA Forecasts and NEI Actual Emissions for Non-EGU Emissions



# INVENTORY PROJECTS

## MARAMA 2008

1. Emission Forecasting Models –  
IPM and EGAS
2. Ammonia Emissions Estimation
3. Condensable PM<sub>2.5</sub>
4. Mobile Source Organic Carbon

# INVENTORY PROJECTS

## MARAMA 2008

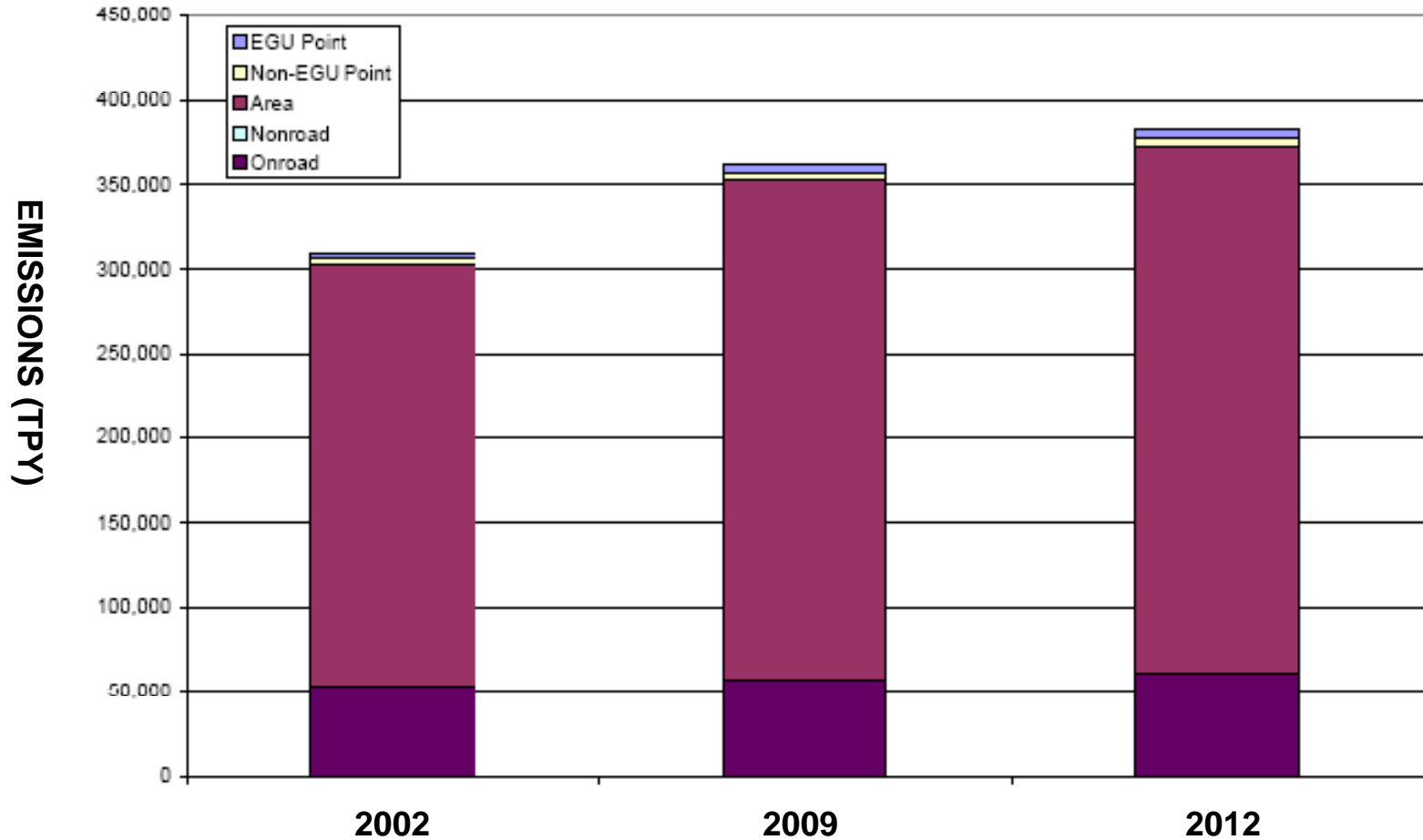
1. Why is ammonia important?
2. PM<sub>2.5</sub>





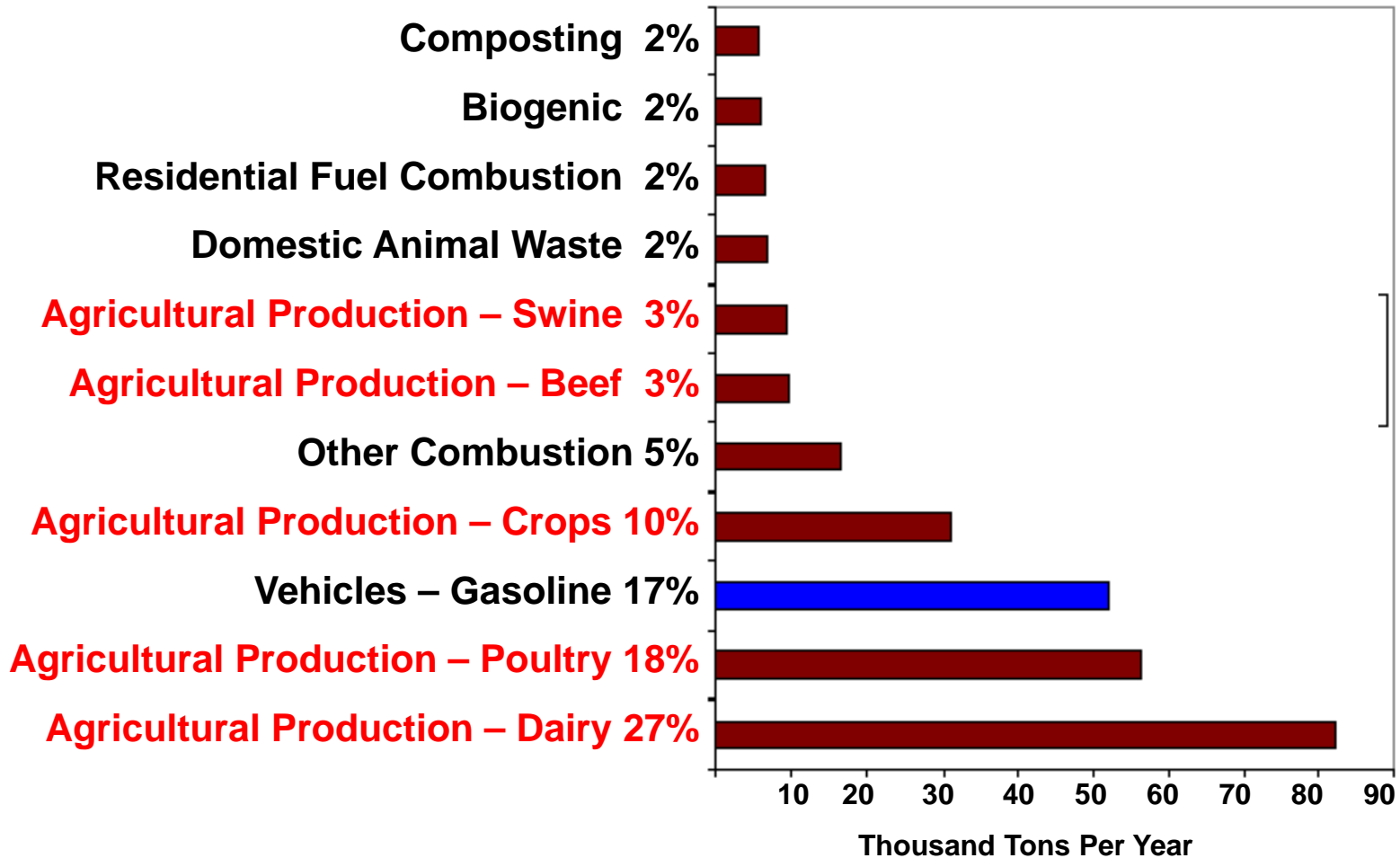
# INVENTORY PROJECTS - MARAMA 2008

## MANE-VU Ammonia Emissions Projections



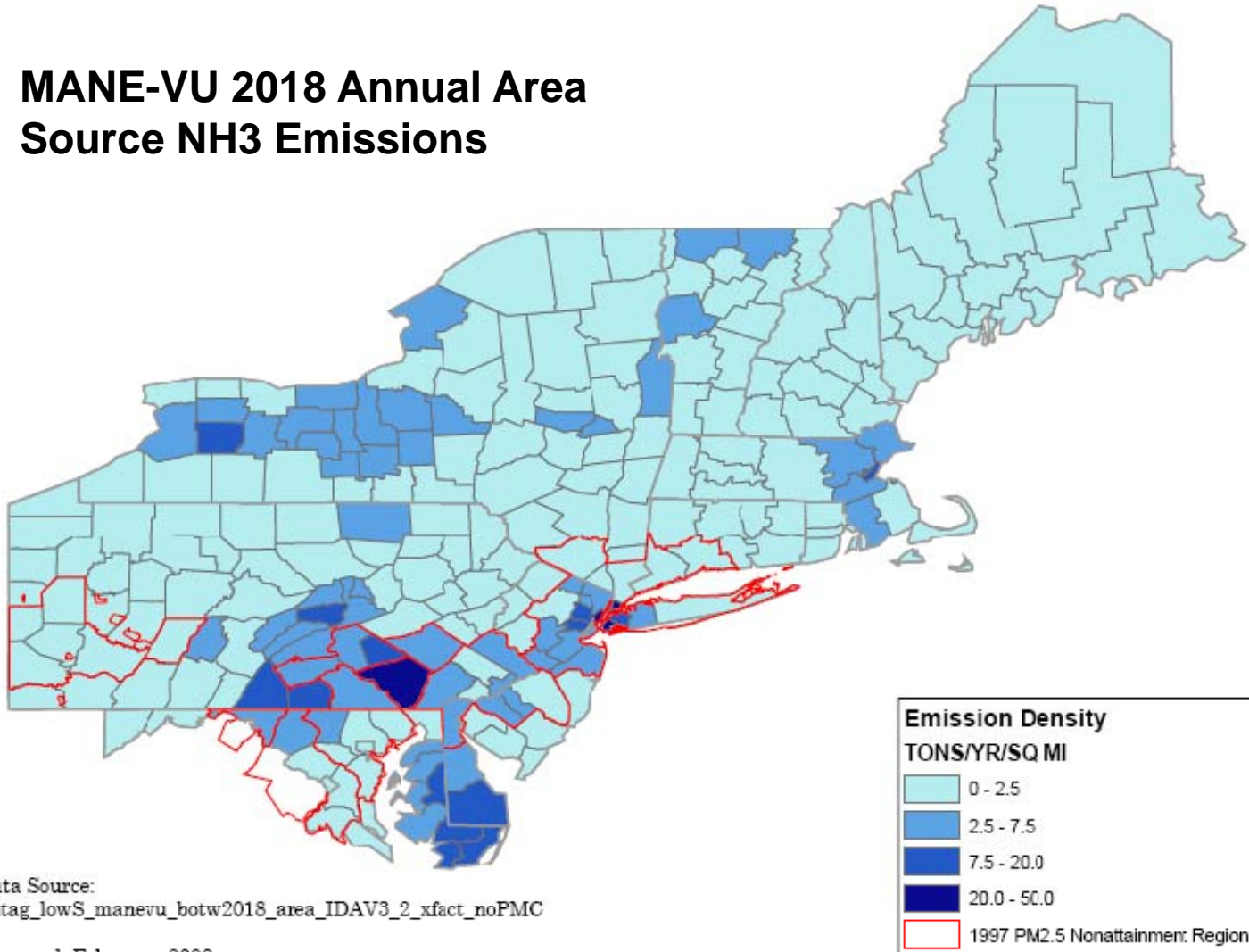
# INVENTORY PROJECTS - MARAMA 2008

## Top Ammonia Source Categories



# INVENTORY PROJECTS - MARAMA 2008

## MANE-VU 2018 Annual Area Source NH<sub>3</sub> Emissions



Data Source:  
untag\_lowS\_manevu\_botw2018\_area\_IDAV3\_2\_xfact\_noPMC

Prepared: February, 2008

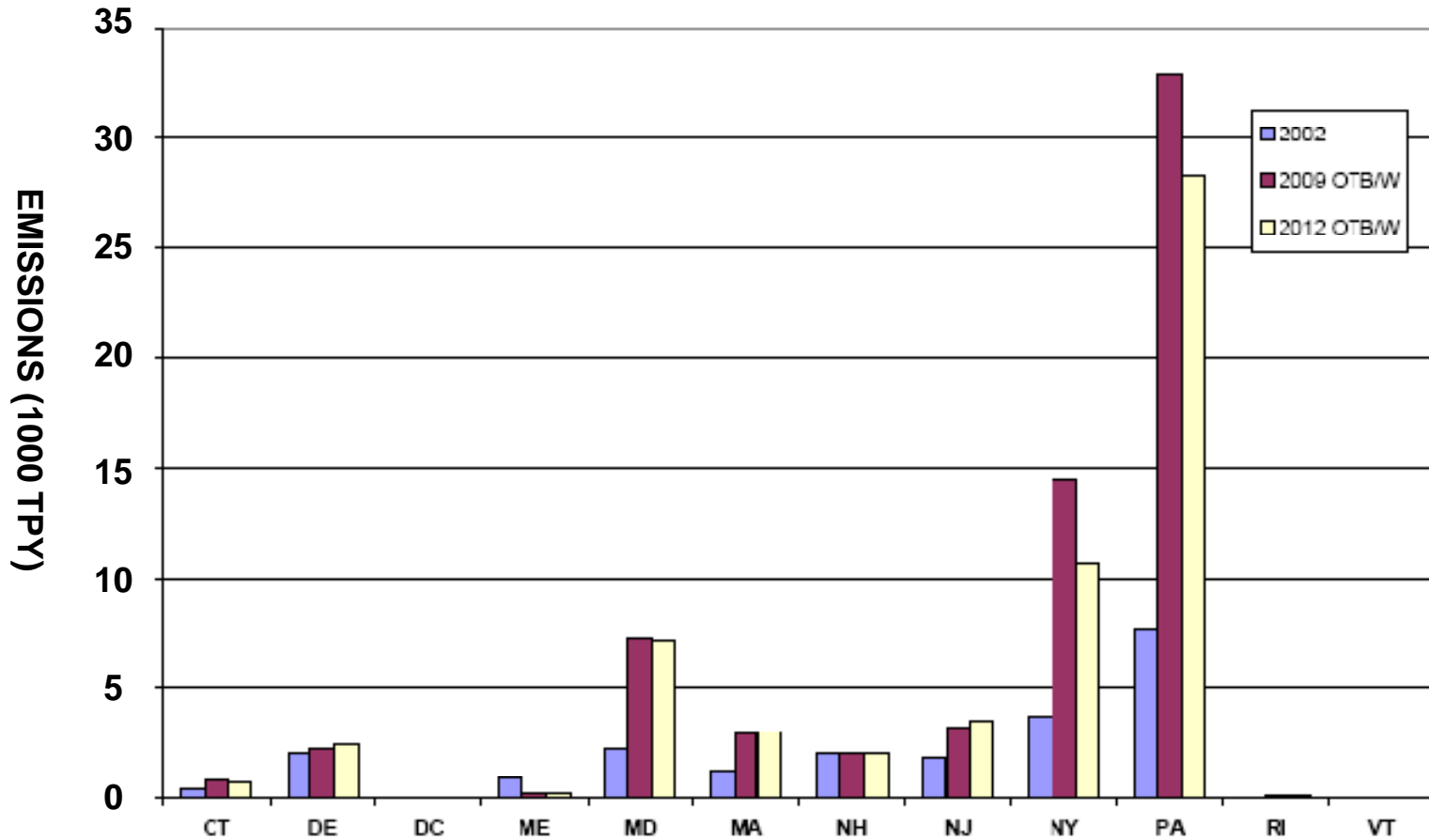
# INVENTORY PROJECTS

## MARAMA 2008

1. Emission Forecasting Models – IPM and EGAS
2. Ammonia Emissions Estimation
3. **Condensable PM2.5**
4. Mobile Source Organic Carbon

# INVENTORY PROJECTS - MARAMA 2008

## EGU Point Source Annual PM2.5 Emissions



# INVENTORY PROJECTS

## MARAMA 2008

1. Emission Forecasting Models –  
IPM and EGAS
2. Ammonia Emissions Estimation
3. Condensable PM<sub>2.5</sub>
4. **Mobile Source Organic Carbon**

## **INVENTORY PROJECTS - MARAMA 2008**

---

- **Mobile Source Emission modeled using USEPA's MOBILE6**
- **USEPA developing a new model MOVES**
- **MOVES requires additional inputs to improve predictions over MOBILE6**
  - **May take time to implement**
- **Inter-RPO project to develop correction factors for the MOBILE6 output.**
- **EPA wants uncorrected MOBILE6 output in SIPs.**

# Next Steps

- RFP issued on February 15
- Responses due by March 7
- Selection committee will be used to evaluate RFP's