

Figure 3-2. Box plots of total non-methane hydrocarbon concentrations (ppbC) by site and time of day (EST).
Some data points were excluded in order to show sufficient detail. The scales vary between sites.

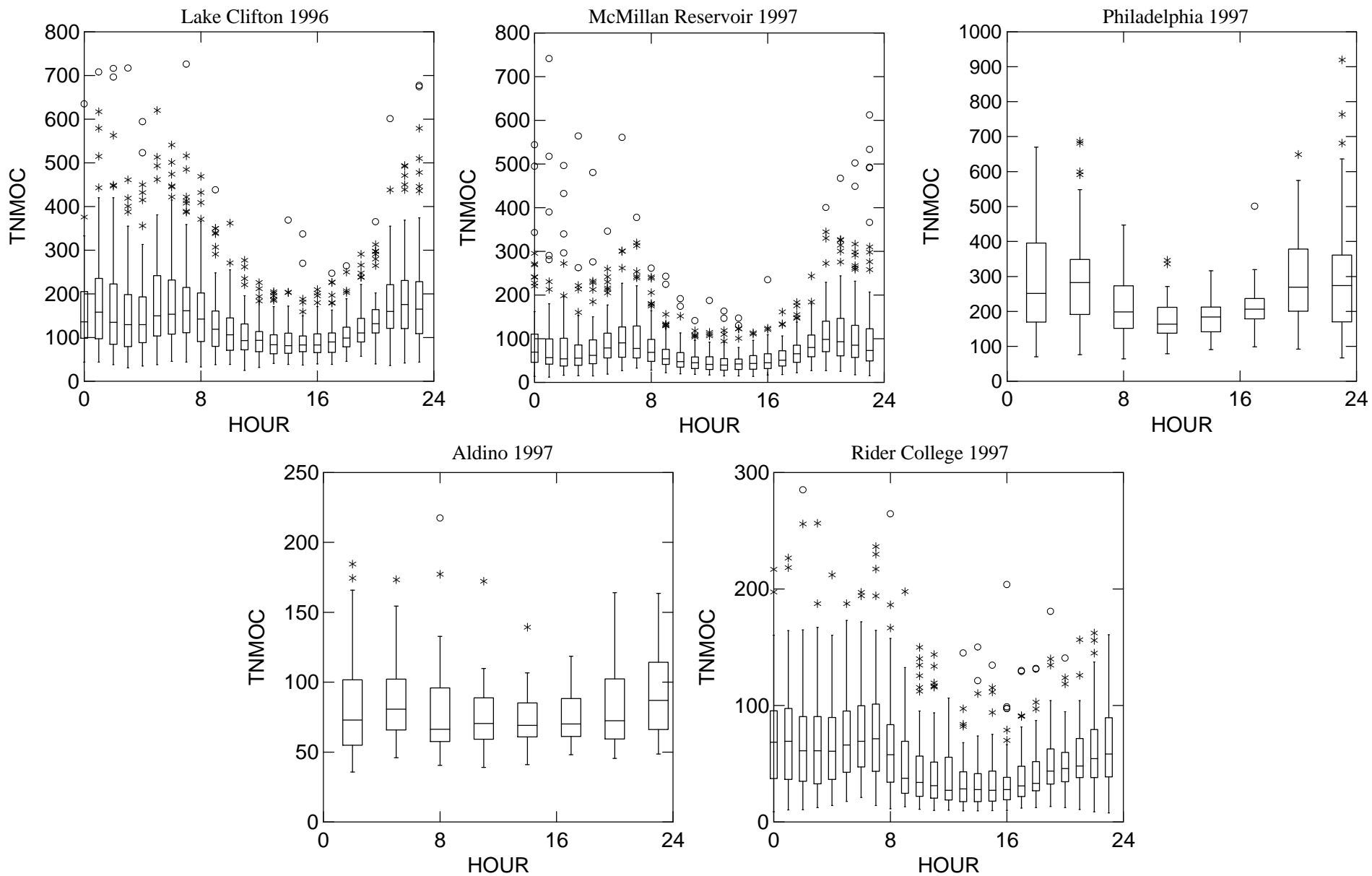


Figure 3-3. Box plots of total non-methane hydrocarbon concentrations (ppbC) by site and time of day (EST). Some data points were excluded in order to show sufficient detail. The scales vary between sites.

COMPLETE LIST OF SPECIES ABBREVIATIONS

ETHYL	X2MPNA	EBENZ
ACETY	X3MPNA	M_PXY
ETHAN	X2M1PE	STYR
PRPYL	NHEXA	OXYL
PROPA	MCPNA	NNON
ISBTA	X24DMP	ISPBZ
X1BUTE	BENZ	NPBZ
NBUTA	CYHXA	METOL
T2BTE	X2MHXA	PETOL
C2BTE	X23DMP	X135TMB
ISPNA	X3MHXA	OETOL
X1PNTE	X224TMP	X124TMB
NPNTA	NHEPT	NDEC
ISPRE	MCYHX	X123TMB
T2PNE	X234TMP	MDEBEN
C2PNE	TOLU	PDEBEN
X22DMB	X2MHEP	NUNDC
CYPNA	X3MHEP	
X23DMB	NOCT	

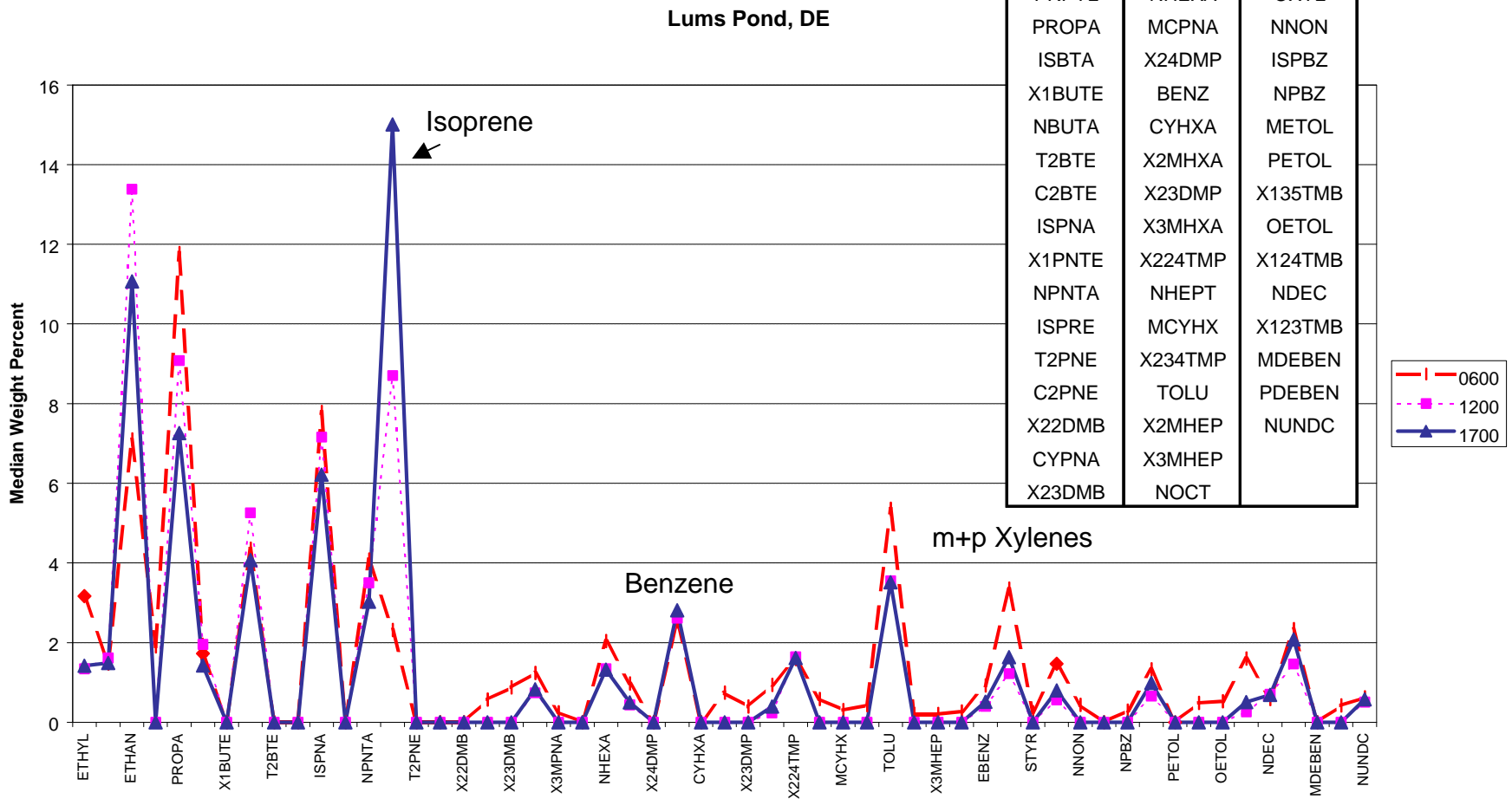


Figure 3-6. Median composition at Lums Pond, Delaware in 1997 at 0600, 1200, and 1700 EST. A key to the species abbreviations is provided in Appendix A.

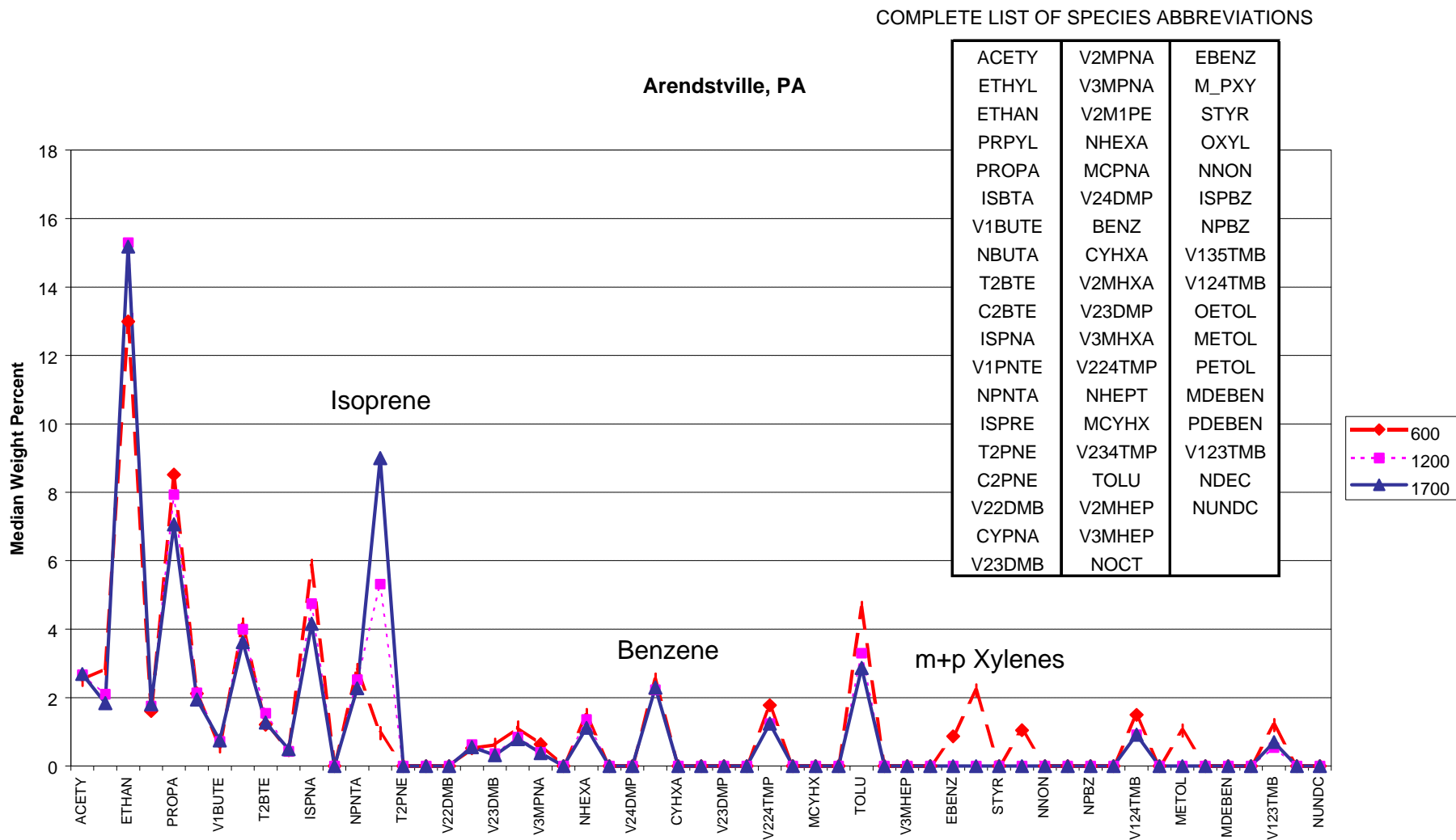


Figure 3-7. Median composition at Arendtsville, Pennsylvania in 1997 at 0600, 1200, and 1700 EST. A key to the species abbreviations is provided in Appendix A.

COMPLETE LIST OF SPECIES ABBREVIATIONS

New Brunswick, NJ 1997

ACETY	V2MPNA	EBENZ
ETHYL	V3MPNA	M_PXY
ETHAN	V2M1PE	STYR
PRPYL	NHEXA	OXYL
PROPA	MCPNA	NNON
ISBTA	V24DMP	ISPBZ
V1BUTE	BENZ	NPBZ
NBUTA	CYHXA	V135TMB
T2BTE	V2MHXA	V124TMB
C2BTE	V23DMP	OETOL
ISPNA	V3MHXA	METOL
V1PNTA	V224TMP	PETOL
NPNTA	NHEPT	MDEBEN
ISPRE	MCYHX	PDEBEN
T2PNE	V234TMP	V123TMB
C2PNE	TOLU	NDEC
V22DMB	V2MHEP	NUNDC
CYPNA	V3MHEP	
V23DMB	NOCT	

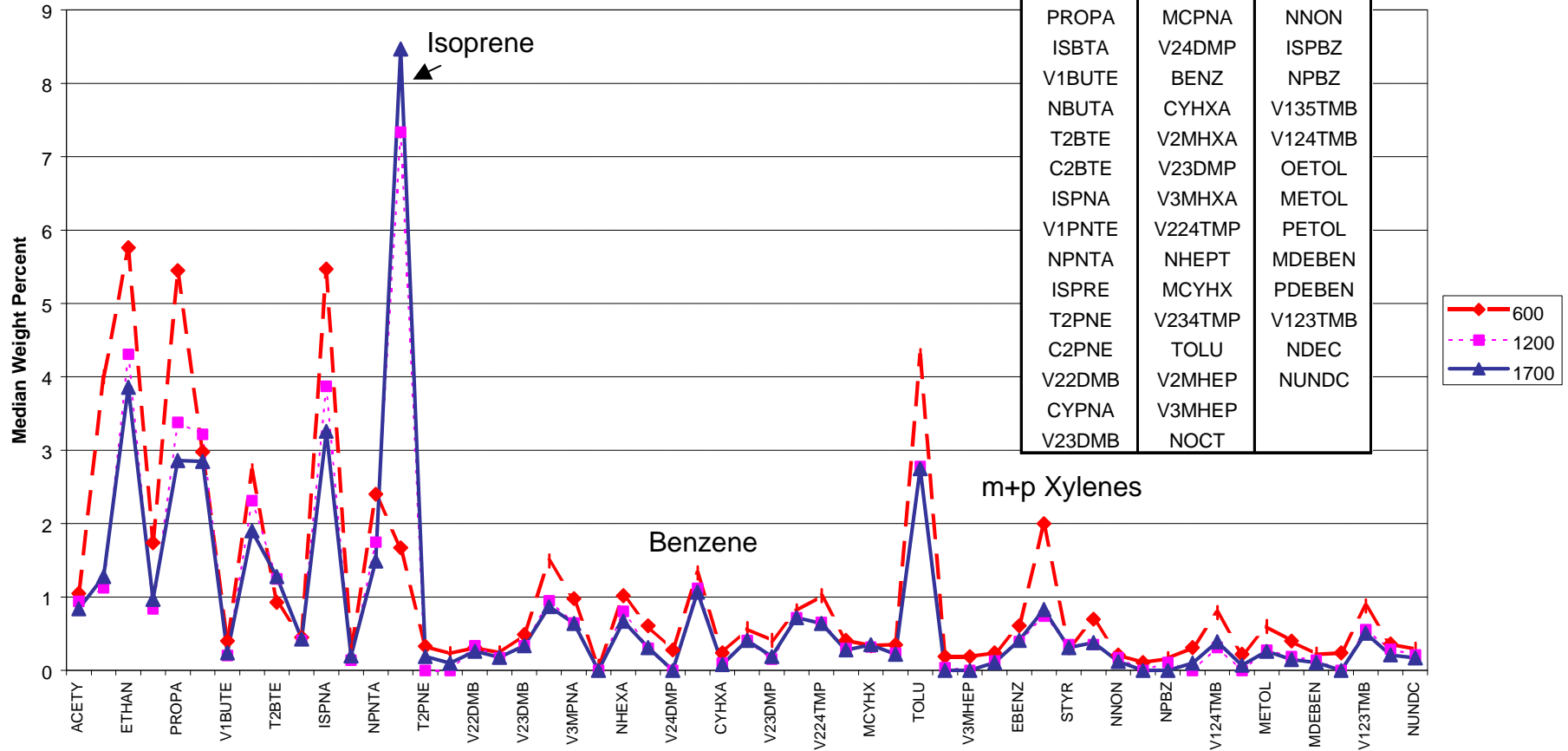


Figure 3-8. Median composition at New Brunswick, New Jersey in 1997 at 0600, 1200, and 1700 EST. A key to the species abbreviations is provided in Appendix A.

COMPLETE LIST OF SPECIES ABBREVIATIONS

ACETY	V2MPNA	EBENZ
ETHYL	V3MPNA	M_PXY
ETHAN	V2M1PE	STYR
PRPYL	NHEXA	OXYL
PROPA	MCPNA	NNON
ISBTA	V24DMP	ISPBZ
V1BUTE	BENZ	NPBZ
NBUTA	CYHXA	V135TMB
T2BTE	V2MHXA	V124TMB
C2BTE	V23DMP	OETOL
ISPNA	V3MHXA	METOL
V1PNTE	V224TMP	PETOL
NPNTA	NHEPT	MDEBEN
ISPRE	MCYHX	PDEBEN
T2PNE	V234TMP	V123TMB
C2PNE	TOLU	NDEC
V22DMB	V2MHEP	NUNDC
CYPNA	V3MHEP	
V23DMB	NOCT	

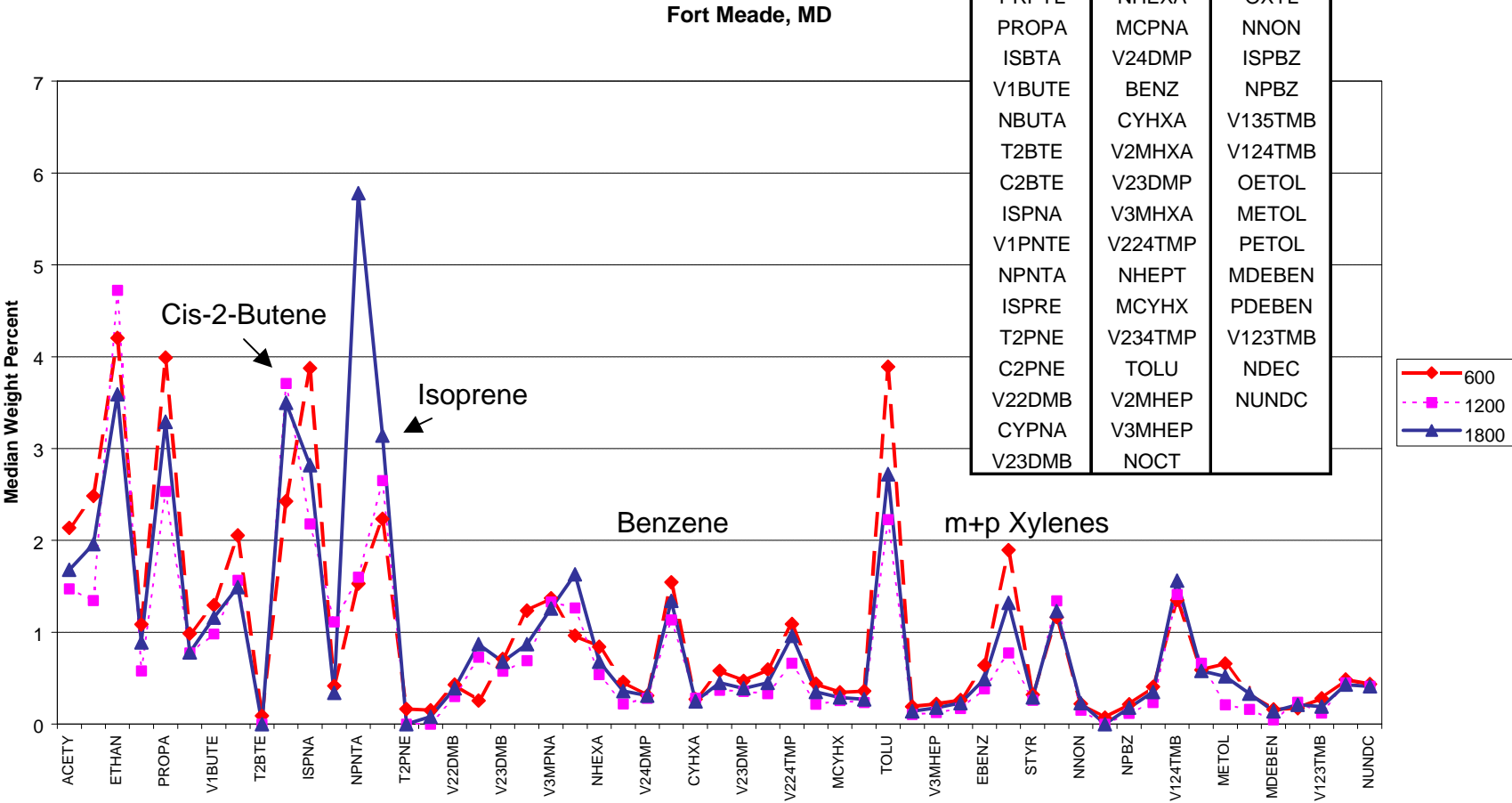


Figure 3-9. Median composition at Fort Meade, Maryland in 1997 at 0600, 1200, and 1800 EST. A key to the species abbreviations is provided in Appendix A.

COMPLETE LIST OF SPECIES ABBREVIATIONS

ETHYL	X2MPNA	EBENZ
ACETY	X3MPNA	M_PXY
ETHAN	X2M1PE	STYR
PRPYL	NHEXA	OXYL
PROPA	MCPNA	NNON
ISBTA	X24DMP	ISPBZ
X1BUTE	BENZ	NPBZ
NBUTA	CYHXA	METOL
T2BTE	X2MHXA	PETOL
C2BTE	X23DMP	X135TMB
ISPNA	X3MHXA	OETOL
X1PNTE	X224TMP	X124TMB
NPNTA	NHEPT	NDEC
ISPRE	MCYHX	X123TMB
T2PNE	X234TMP	MDEBEN
C2PNE	TOLU	PDEBEN
X22DMB	X2MHEP	NUNDC
CYPNA	X3MHEP	
X23DMB	NOCT	

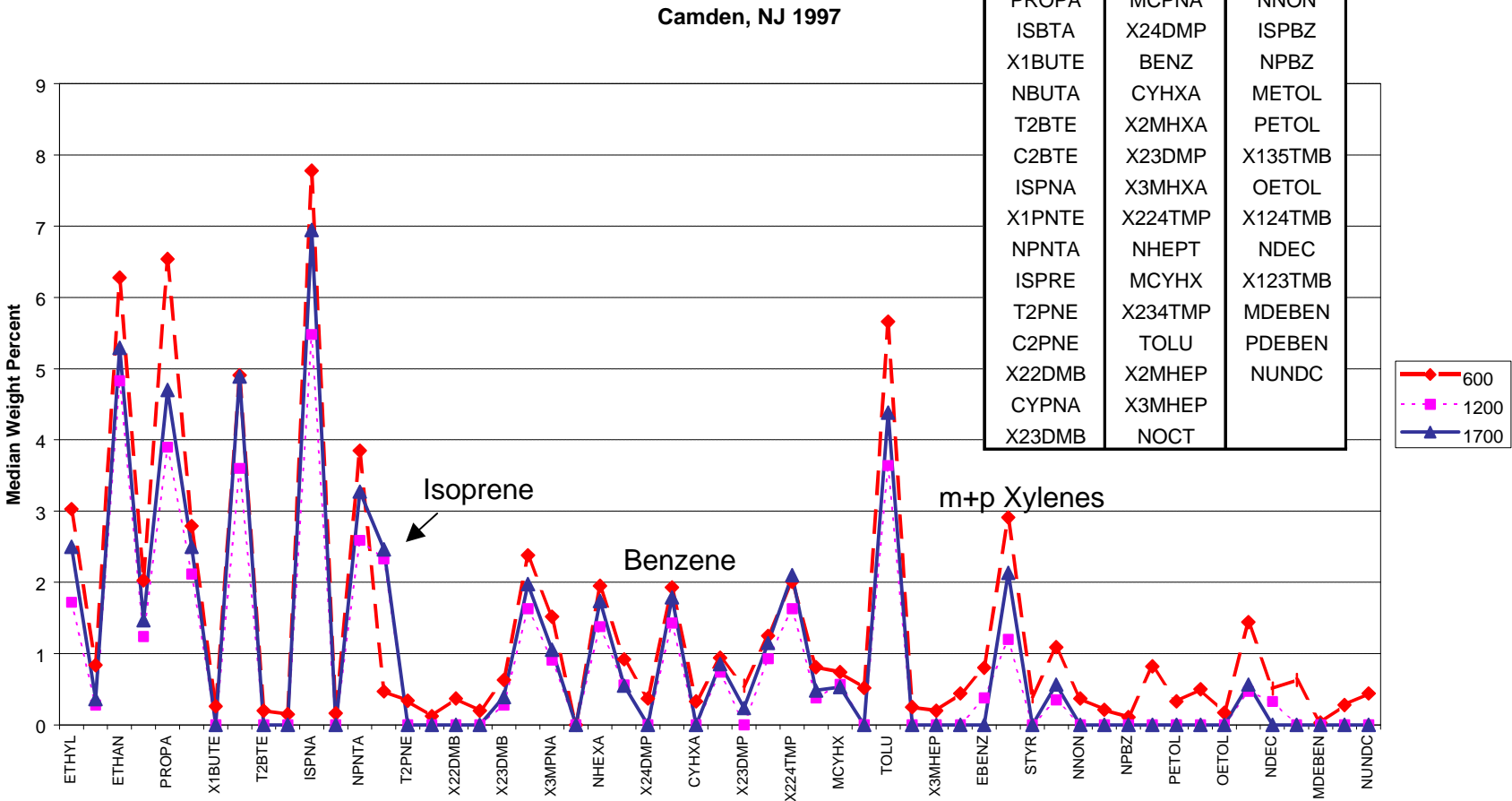


Figure 3-10. Median composition at Camden, New Jersey in 1997 at 0600, 1200, and 1700 EST. A key to the species abbreviations is provided in Appendix A.

COMPLETE LIST OF SPECIES ABBREVIATIONS

ETHYL	X2MPNA	NOCT
ACETY	X3MPNA	EBENZ
ETHAN	X2M1PE	M_PXY
PRPYL	NHEXA	STYR
PROPA	MCPNA	OXYL
ISBTA	X24DMP	NNON
X1BUTE	BENZ	ISPBZ
NBUTA	CYHXA	NPBZ
T2BTE	X2MHXA	METOL
C2BTE	X23DMP	PETOL
ISPNA	X3MHXA	X135TMB
NPNTA	X224TMP	OETOL
ISPRE	NHEPT	X124TMB
T2PNE	MCYHX	NDEC
C2PNE	X234TMP	X123TMB
X22DMB	TOLU	MDEBEN
CYPNA	X2MHEP	PDEBEN
X23DMB	X3MHEP	NUNDC

Philadelphia, PA

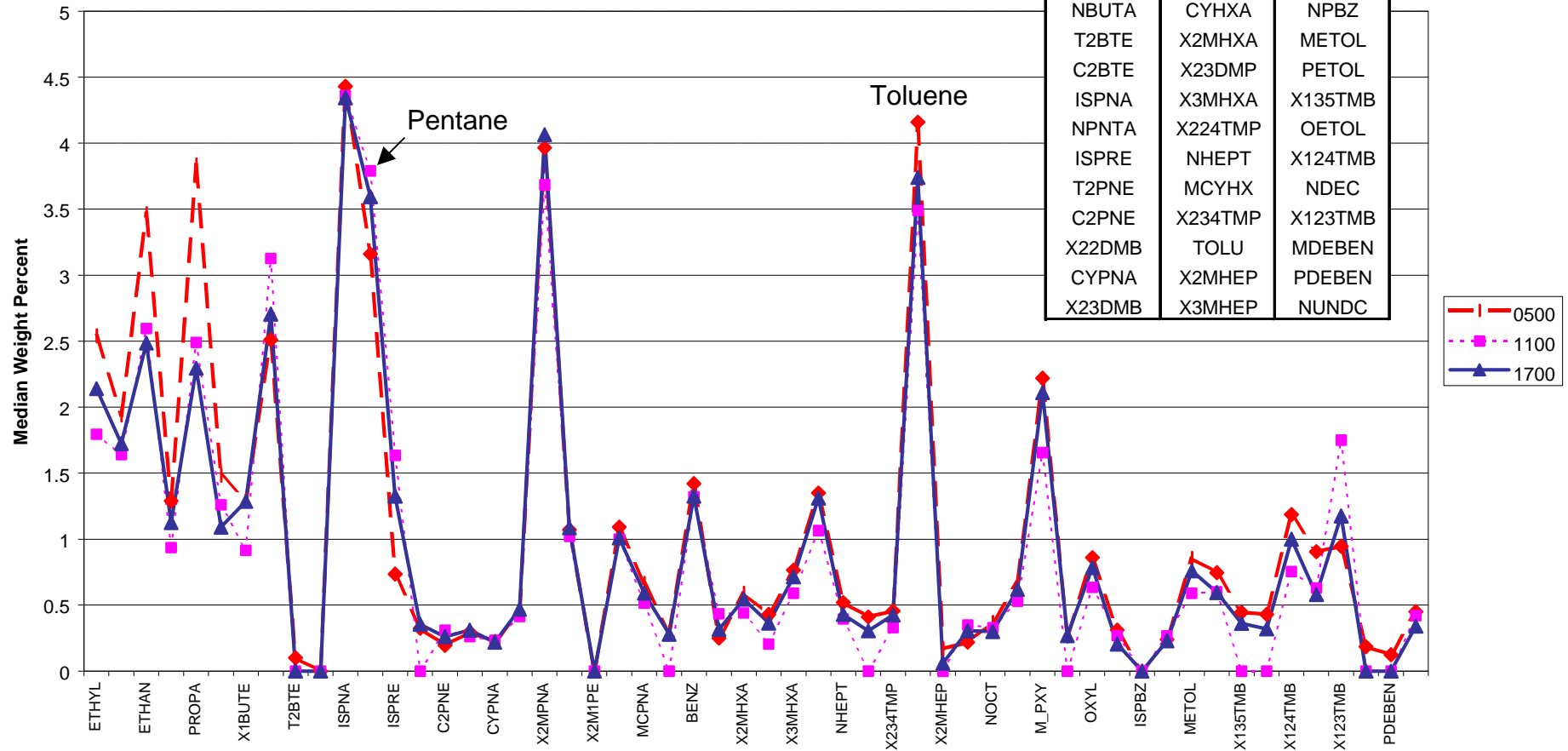


Figure 3-11. Median composition at Philadelphia, Pennsylvania in 1997 at 0500, 1100, and 1700 EST. A key to the species abbreviations is provided in Appendix A.

COMPLETE LIST OF SPECIES ABBREVIATIONS

McMillan Reservoir (Washington DC) 1997

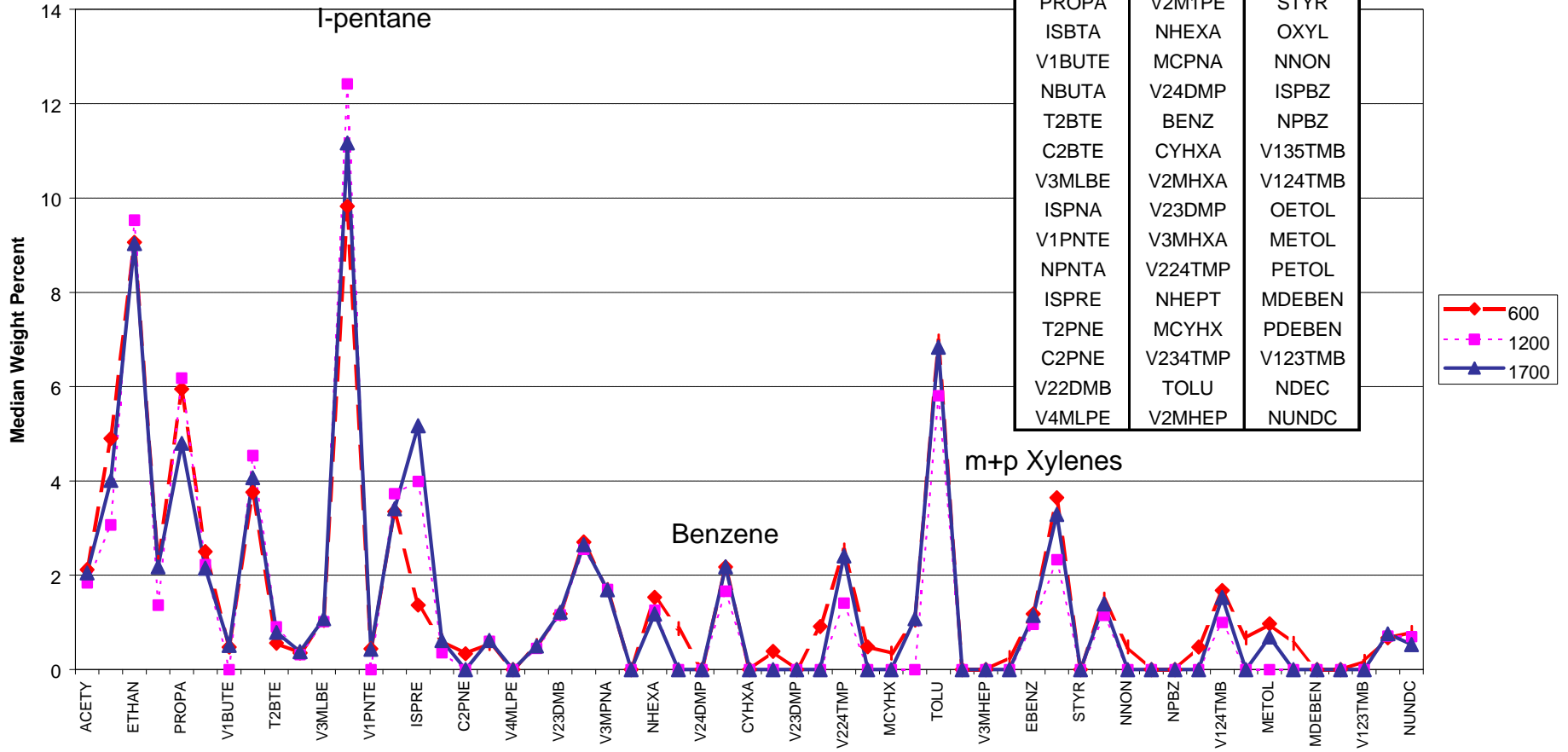


Figure 3-12. Median composition at McMillan Reservoir (Washington DC) in 1997 at 0600, 1200, and 1700 EST. A key to the species abbreviations is provided in Appendix A.

COMPLETE LIST OF SPECIES ABBREVIATIONS

ETHYL	X2MPNA	EBENZ
ACETY	X3MPNA	M_PXY
ETHAN	X2M1PE	STYR
PRPYL	NHEXA	OXYL
PROPA	MCPNA	NNON
ISBTA	X24DMP	ISPBZ
X1BUTE	BENZ	NPBZ
NBUTA	CYHXA	METOL
T2BTE	X2MHXA	PETOL
C2BTE	X23DMP	X135TMB
ISPNA	X3MHXA	OETOL
X1PNTE	X224TMP	X124TMB
NPNTA	NHEPT	NDEC
ISPRE	MCYHX	X123TMB
T2PNE	X234TMP	MDEBEN
C2PNE	TOLU	PDEBEN
X22DMB	X2MHEP	NUNDC
CYPNA	X3MHEP	
X23DMB	NOCT	

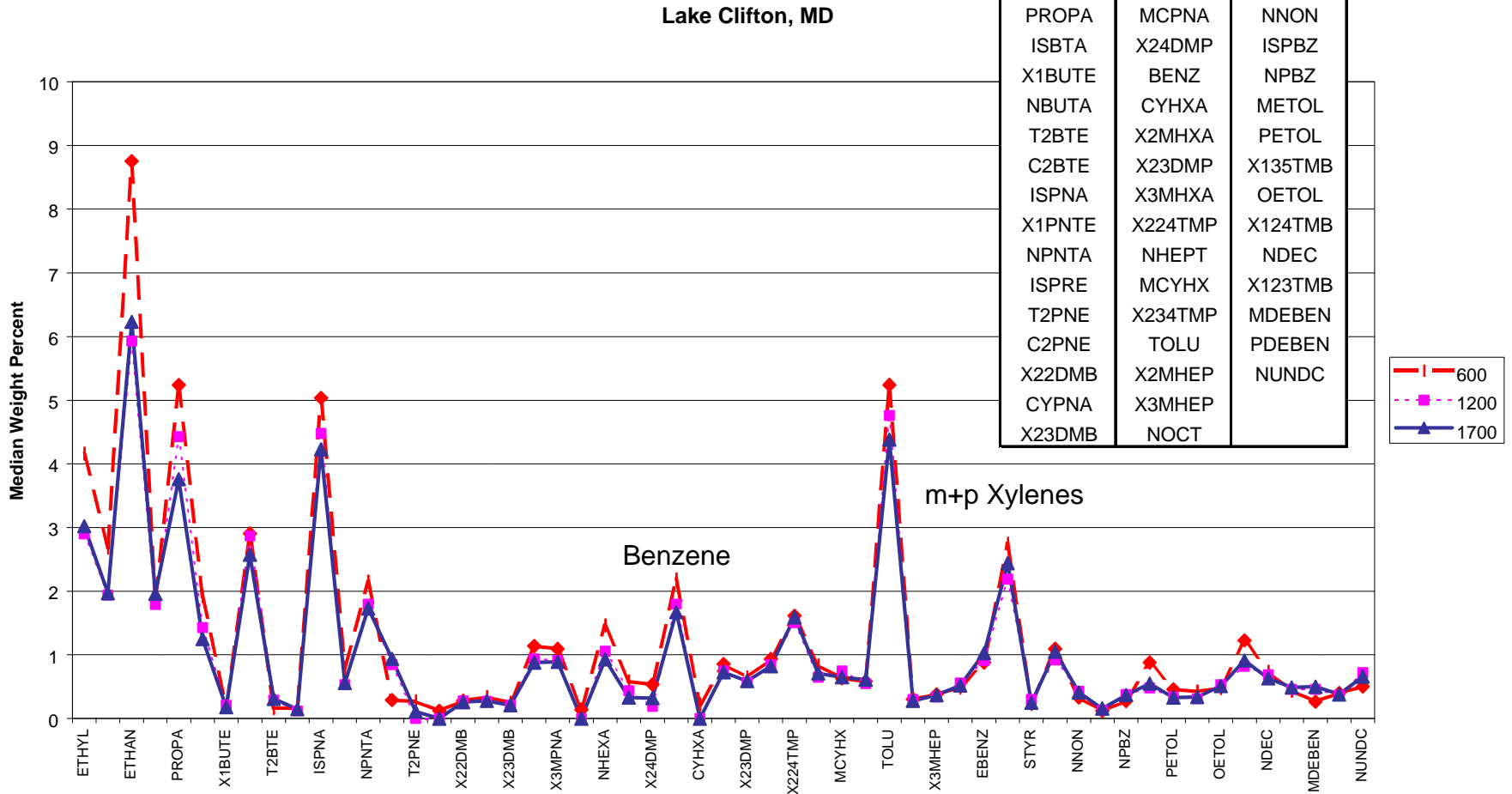
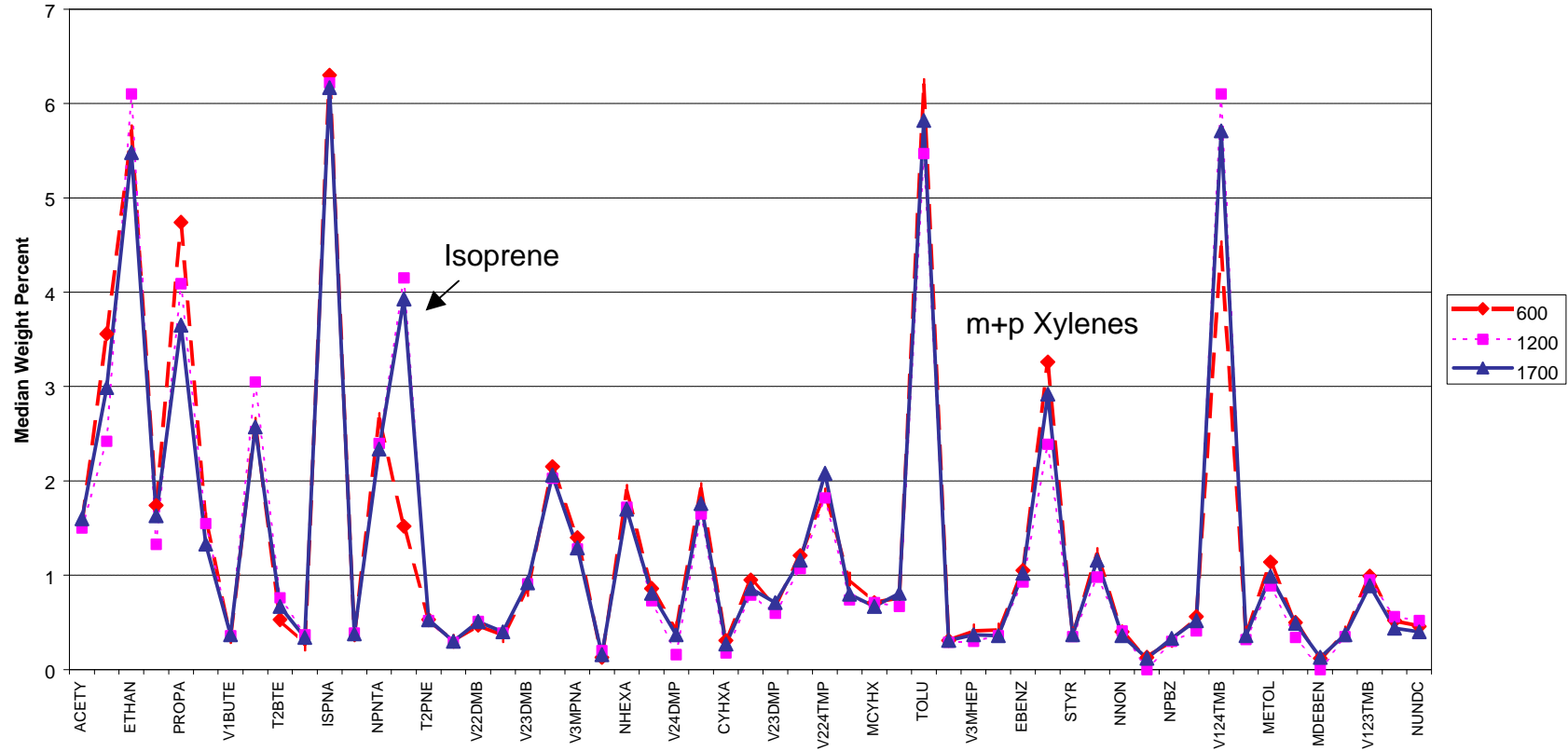


Figure 3-13. Median composition at Lake Clifton, Maryland in 1997 at 0600, 1200, and 1700 EST. A key to the species abbreviations is provided in Appendix A.

Essex, MD 1997



COMPLETE LIST OF SPECIES ABBREVIATIONS

ACETY	PROPA	T2BTE	NPNTA	V22DMB	V3MPNA	V24DMP	V23DMP	MCYHX	V3MHEP	STYR	NPBZ	METOL	V123TMB
ETHYL	ISBTA	C2BTE	ISPNA	CYPNA	V2M1PE	BENZ	V3MHXA	V234TMP	NOCT	OXYL	V135TMB	PETOL	NDEC
ETHAN	V1BUTE	ISPNA	T2PNE	V23DMB	NHEXA	CYHXA	V224TMP	TOLU	EBENZ	NNON	V124TMB	MDEBEN	NUNDC
PRPYL	NBUTA	V1PNTE	C2PNE	V2MPNA	MCPNA	V2MHXA	NHEPT	V2MHEP	M_PXY	ISPBZ	OETOL	PDEBEN	

Figure 3-14. Median composition at Essex, Maryland in 1997 at 0600, 1200, and 1700 EST. A key to the species abbreviations is provided in Appendix A.

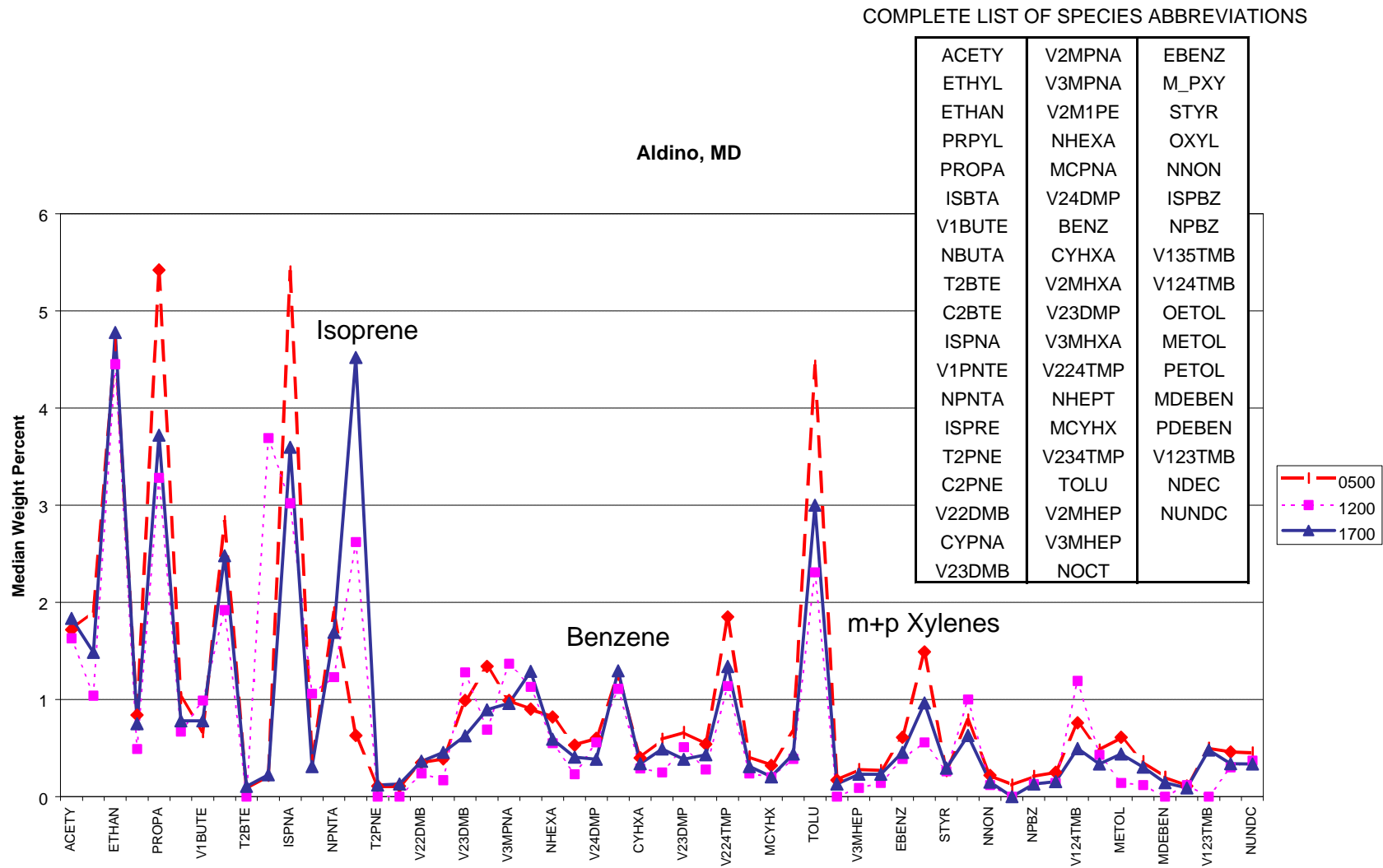


Figure 3-15. Median composition at Aldino, Maryland in 1997 at 0500, 1200, and 1700 EST. A key to the species abbreviations is provided in Appendix A.

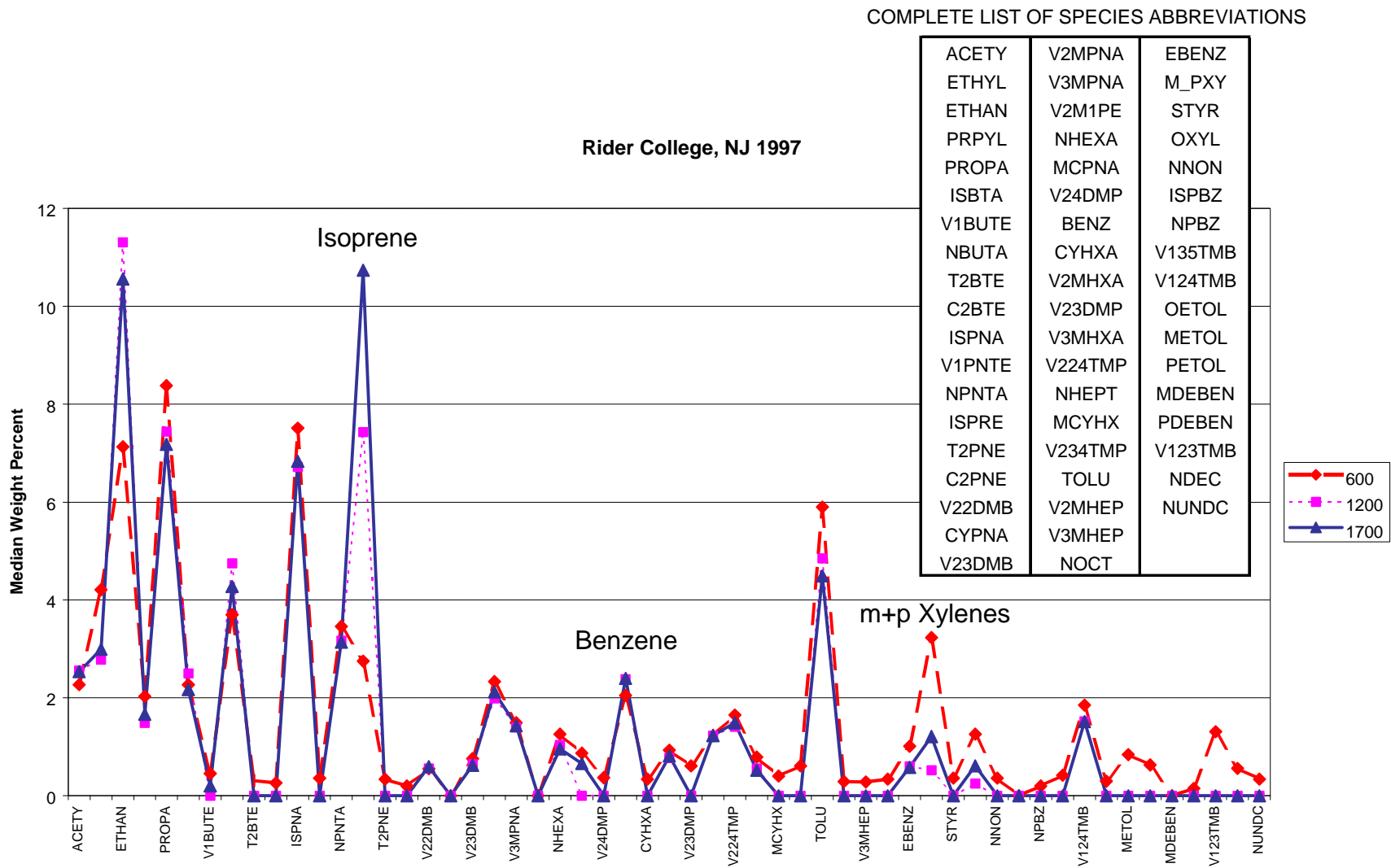


Figure 3-16. Median composition at Rider College, New Jersey in 1997 at 0600, 1200, and 1700 EST. A key to the species abbreviations is provided in Appendix A.

Median Toluene to Benzene Ratio
Type 2 Sites

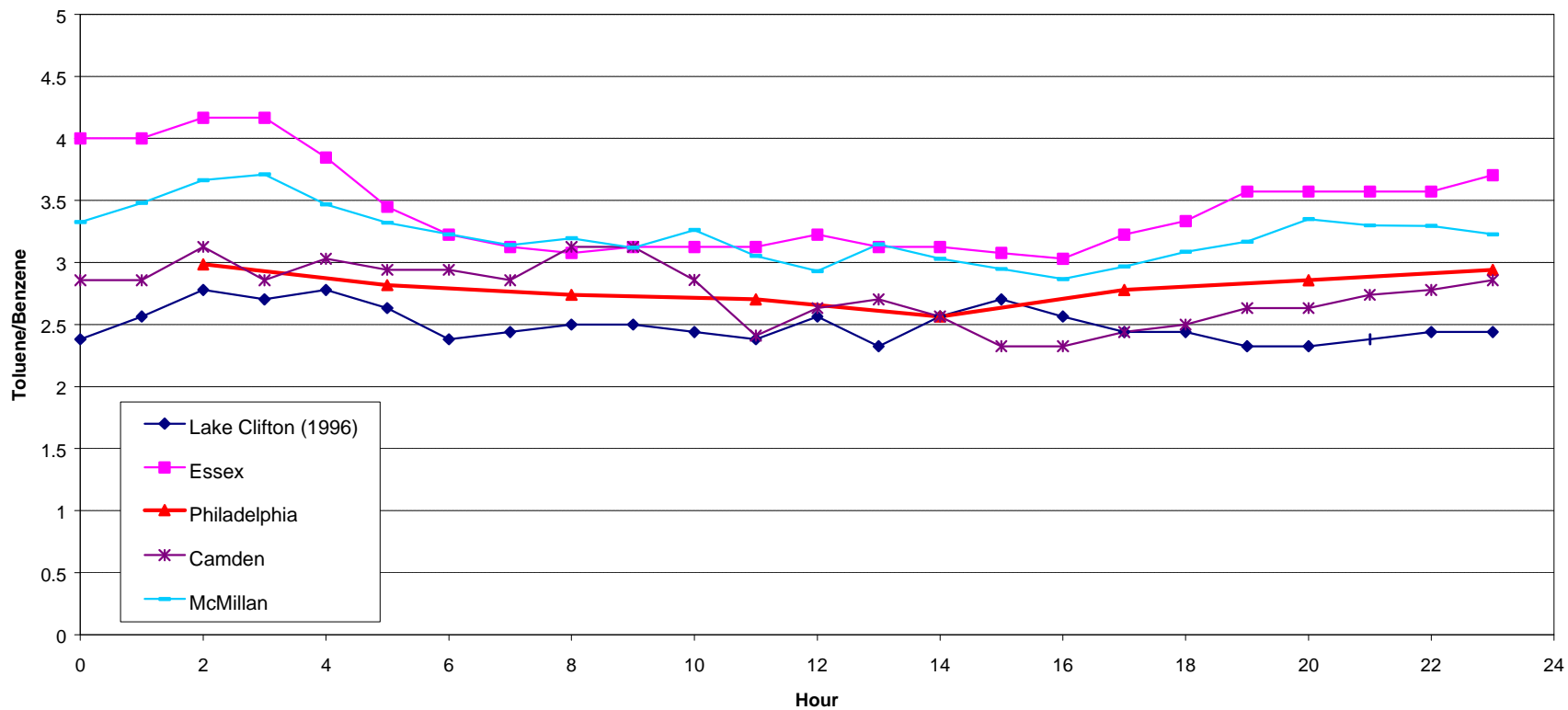


Figure 3-33. Median toluene to benzene ratios by time of day (EST) at Type 2 sites in the Mid-Atlantic region during 1997.

COMPLETE LIST OF SPECIES ABBREVIATIONS

ACETY	V2MPNA	EBENZ
ETHYL	V3MPNA	M_PXY
ETHAN	V2M1PE	STYR
PRPYL	NHEXA	OXYL
PROPA	MCPNA	NNON
ISBTA	V24DMP	ISPBZ
V1BUTE	BENZ	NPBZ
NBUTA	CYHXA	V135TMB
T2BTE	V2MHXA	V124TMB
C2BTE	V23DMP	OETOL
ISPNA	V3MHXA	METOL
V1PNTE	V224TMP	PETOL
NPNTA	NHEPT	MDEBEN
ISPRE	MCYHX	PDEBEN
T2PNE	V234TMP	V123TMB
C2PNE	TOLU	NDEC
V22DMB	V2MHEP	NUNDC
CYPNA	V3MHEP	
V23DMB	NOCT	

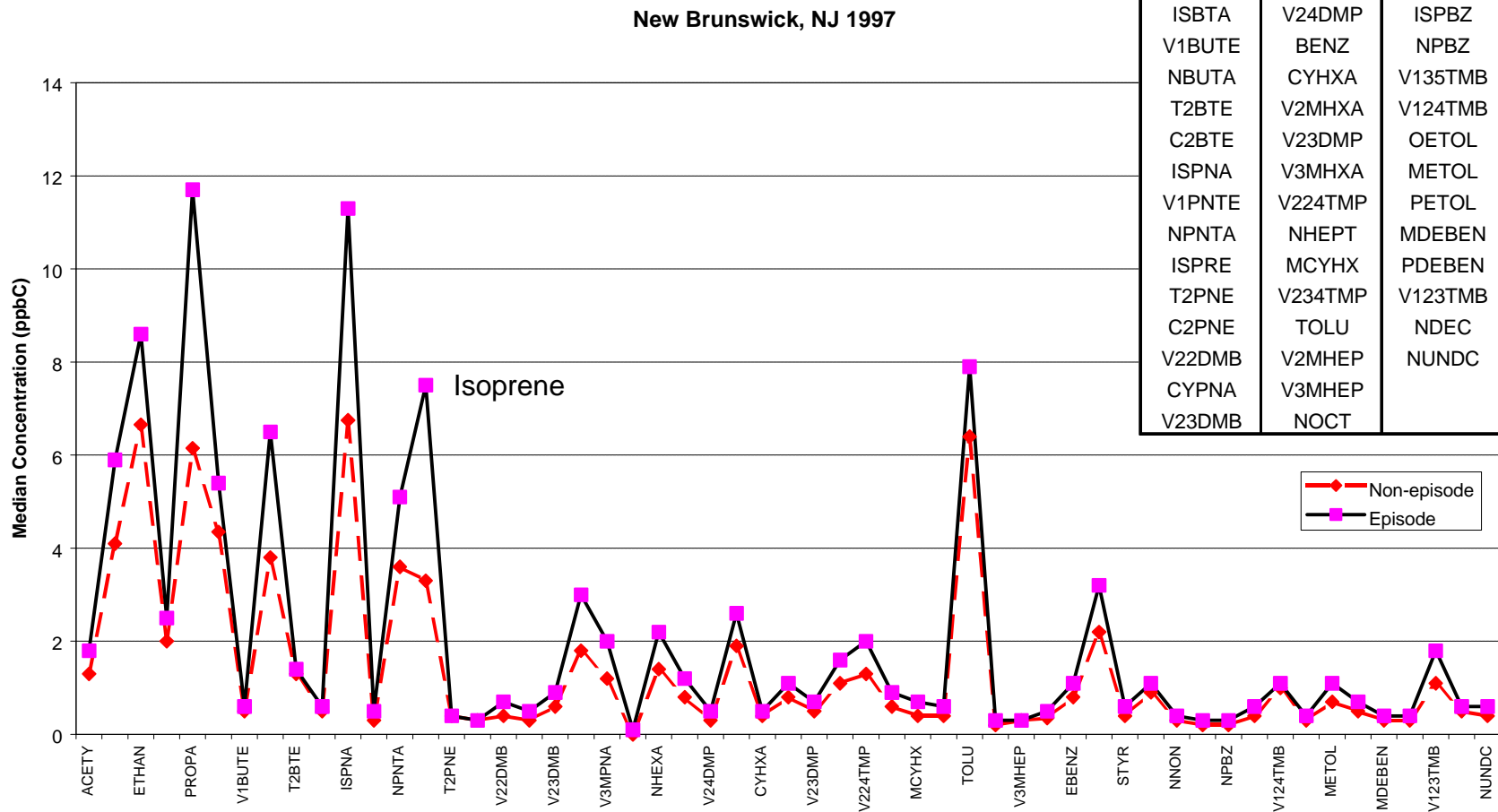


Figure 3-42. Median concentrations at New Brunswick, New Jersey in 1997 from 0600 to 0800 EST on episode days (days with peak ozone concentrations at the site ≥ 100 ppb) and non-episode days (days with peak ozone concentrations < 100 ppb). A key to the species abbreviations is provided in Appendix A.